

This direct mount for TECH3 master cylinder will fit all SRAM shifters with removable clamp.

Tool required : 4mm Allen key, T25 Torx driver

1- Using the 4mm Allen key, unbolt the master cylinder clamp and remove the entire unit from the handlebars. If present, remove the gear shifter and its clamp.

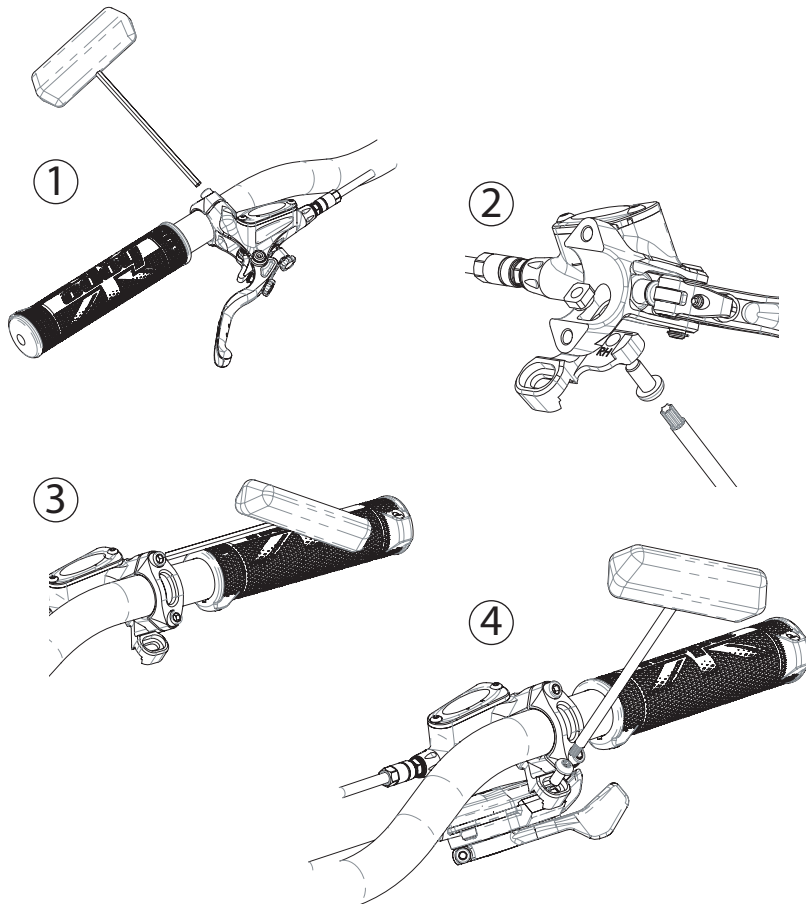
2- Identify the RH and LH shifter mount and place it over the slot under the master cylinder. Drop the special nut into the lever bracket (square face facing up). Using the T25 Torx driver tighten the M5 bolt so the shifter mount is securely fastened to the master cylinder unit. Tightening torque: 4-5 N.m

3- Re fit the master cylinder to the handlebar and alternatively tighten the clamp bolts using the 4mm Allen key. Tightening torque: 4-5 N.m

4- Install the shifter lever onto the direct mount and using the T25 Torx driver tighten the M5 bolt. Tightening torque: 4-5 N.m

Note: use one or the other tapped hole on the shifter pod and adjustment slot on the direct mount to find the best lateral position for the shifter

5- Go for a test ride



This direct mount for TECH3 master cylinder will fit all SRAM shifters with removable clamp.

Tool required : 4mm Allen key, T25 Torx driver

1- Using the 4mm Allen key, unbolt the master cylinder clamp and remove the entire unit from the handlebars. If present, remove the gear shifter and its clamp.

2- Identify the RH and LH shifter mount and place it over the slot under the master cylinder. Drop the special nut into the lever bracket (square face facing up). Using the T25 Torx driver tighten the M5 bolt so the shifter mount is securely fastened to the master cylinder unit. Tightening torque: 4-5 N.m

3- Re fit the master cylinder to the handlebar and alternatively tighten the clamp bolts using the 4mm Allen key. Tightening torque: 4-5 N.m

4- Install the shifter lever onto the direct mount and using the T25 Torx driver tighten the M5 bolt. Tightening torque: 4-5 N.m

Note: use one or the other tapped hole on the shifter pod and adjustment slot on the direct mount to find the best lateral position for the shifter

5- Go for a test ride